



FILO PER LEGATURE

- [ITA] Filo speciale per legature di anelli sulla canna 25 mt. per bobina.
 [ENG] Special wrapping line available in different colours. 25 mt. spool.
 [FRA] Fil special pour legaturer les anneaux de la canne bobines de 25 mts.
 [ESP] Hilo para ligaduras. hilo especial para ligamientos de anillos sobre la caña 25 mt. por bobina



INFO FILO PER LEGATURE			
CODE	COLORS	MIN.Q.TY	PRICE / PC
3000950	BLACK	25 BOBINE / 25 SPOOLS	
3000960	RED	25 BOBINE / 25 SPOOLS	
3000970	SILVER	25 BOBINE / 25 SPOOLS	
3000980	GOLD	25 BOBINE / 25 SPOOLS	

Art. 3000910

VERNICE PER LEGATURE

- [ITA] ad asciugatura rapida mono-componente, 20 ml.
 [ENG] Fast dry mono-component transparent laquer for wrapping line, 20 ml.
 [FRA] Vernis pour legatures mono-composant transparente, 20 ml.
 [ESP] Pintura para ligaduras secado rapido mono-componente, 20 ml.

(Min. q.ty 12 bottles)

PRICE / PC



Art. 3000900

FILO PER LEGATURE NERO

- [ITA] Filo speciale per legature di anelli sulla canna. 2.000 yds per bobina.
 [ENG] Special BLACK wrapping line - 2.000 yds per spool.
 [FRA] Fil noir special pour legaturer les anneaux de la canne - bobines de 2000 yds.
 [ESP] Hilo negro especial para ligaduras de anillos en la caña 2000 yds por bobina

PRICE / PC

(Min. q.ty 1 spool)



Art. 3000899

CONTAMETRI

- [ITA] Unità di misura in metri
 Scatola da 1 pz.
 [ENG] Line counter (measure unit in mt.) - Box x 1 pc.
 [FRA] Compte mètres (unité de mesure in mt.) - Boite de 1 piece.
 [ESP] Contador de metros (unidad de medida in mt.) - caja de 1 unidad.

PRICE / PC

(Min. q.ty 10 boxes)



COLLA BI TECH ML 25

- [ITA] Bicomponente per legature - inodore
 [ENG] Bicomponent glue for wrappings - odorless
 [FRA] Colle pour legatures bi-composante - inodore
 [ESP] Cola para ligaduras bicomponente - inodoro

(Min. q.ty 6 pcs.)



100%BIO
 new formula
 safe for the environment

INFO COLLA BI TECH

CODE	TEMPI ASCIUGATURA / DRYING TIME	PRICE / PC
3000915	6 H ESTATE-SUMMER / 8 H INVERNO-WINTER	

Art. 4995004

SILICONE SPRAY

- [ITA] Lubrificante e protettivo 200 ml
 [ENG] Silicone spray Lubricating and protective, 200 ml
 [FRA] Silicone pulvérisée lubrifiant et de protection, 200 ml
 [ESP] Silicone Spray lubricante y protectivo, 200 ml

Ideale per canne, mulinelli e monofili - antisalsedine e anticorrosione.

(Min. q.ty 12 bottles)

PRICE / PC



Art. 4990410

BOBINATORE

- [ITA] Bobinatore per mulinello
 - 1 ventosa di fissaggio - regolabile per tutti monofili.
 [ENG] Reel Winder - 1 cup of attachment - adjustable for all monofilaments.
 [FRA] Enrouleur - 1 tasse de fixation - réglable pour tous les mono.
 [ESP] Bobinador para carrete - 1 ventosa para fijar - regulable para todos los monohilos



PRICE / PC

(Min. q.ty 10 pcs.)



FODERINO UNIVERSALE IN STOFFA

[ITA] Foderino universale in stoffa
 [ENG] Universal cloth rod covers
 [FRA] Fourreau universel en tissu
 [ESP] Funda universal en tejido

INFO FODERINO

CODE	SIZE (CM)	MIN.Q.TY	PRICE / PC
2009916	160X13	50	
2009920	200X13	50	

Art. 2000500 CINTURINO



[ITA] Cinturino con velcro per canne a innesti, cm. 20 - Busta da 2 pz.
 [ENG] Velcro lace for put-over rods, cm. 20 - Bag x 2 pcs.
 [FRA] Bracelet avec velcro pour cannes a emmanchements, cm. 20 - Sachet de 2 pieces.
 [ESP] Correa con velcro para cañas enchufables cm. 20 - Bolsa de 2 unidades.

(Min. q.ty 20 bags.)

PRICE / PC

SALVAPUNTA

[ITA] Cappucci salvapunta in plastica di colore azzurro.
 [ENG] Top guides light blue shaped plastic cap.
 [FRA] Capuchons protege-pointe modele plastique.
 [ESP] Capuchones salvapunta de plastico de color azul



INFO SALVAPUNTA			
CODE	SIZE	MIN.Q.TY	PRICE / PC
2000300	LARGE	50	
2000301	MEDIUM	50	

SALVAPUNTA

[ITA] Cappucci salvapunta in plastica di colore nero.
 [ENG] Top guides black shaped plastic cap.
 [FRA] Capuchon protege-pointe modele plastique.
 [ESP] Capuchones salvapunta de plastico de color negro



INFO SALVAPUNTA			
CODE	SIZE	MIN.Q.TY	PRICE / PC
2000003	SMALL / WJ 25	40	
2000004	MEDIUM / WJ 30	40	
2000005	LARGE / WJ 35	40	
2000006	EXTRA LARGE / WJ 40	40	

SALVAPUNTA

[ITA] Salvapunta standard in plastica
 Filetto interno removibile
 [ENG] Standard plastic guide protector removable inner plastic thread
 [FRA] Capuchons protege-pointe standard en plastique. Filet interieur detachable.
 [ESP] Capuchones salvapunta standard de plastico. Hilo interno de plastico desmontable.



INFO SALVAPUNTA			
CODE	SIZE	MIN.Q.TY	PRICE / PC
2000350	M	50	
2000351	L	50	
2000352	XL	50	

PLACCA PORTAMULINELLO

[ITA] Placca portamulinello in acciaio, ammortizzatore gomma.
 [ENG] Steel plate reel seat with rubber cushion.
 [FRA] Porte moulinet curseur - amortisseur caoutchouc.
 [ESP] Placa portacarrete de acero, amortizador de goma



INFO				
CODE	LENGTH	MIN.Q.TY PCS	DESCRIPTION	PRICE / PC
2999022	6 LS6B	25	SATIN LOOK	
2999024	6 LS7B	25	TITANIUM PLATED	

PLACCA PORTAMULINELLO

[ITA] Placca portamulinello nero senza ammortizzatore in gomma
 [ENG] Plate reel seat black chromed.
 [FRA] Porte moulinet curseur bruni
 [ESP] Placa portacarrete negro pavonado sin amortizador de goma



INFO			
CODE	SIZE	MIN.Q.TY PCS	PRICE / PC
2999026	S6B	25	
2999027	S7B	25	

PLACCA PORTAMULINELLO

[ITA] Placca portamulinello nero, ammortizzatore gomma.
 [ENG] Plate reel seat with rubber cushion.
 [FRA] Porte moulinet curseur bruni - amortisseur caoutchouc.
 [ESP] Placa portacarrete negro pavonado, amortizador de goma



INFO			
CODE	SIZE	MIN.Q.TY PCS	PRICE / PC
2999029	6 LS6B	25	
2999030	7 LS7B	25	

Art.1999990

[ITA] Ricambi mulinelli spinning
 [ENG] Spinning reels spares
 [FRA] Rechange pour moulinet a spinning
 [ESP] Ricambio para carretes da spinning



(Min.q.ty 10 pcs.)

PRICE / PC

[ITA] Cuscinetto di ricambio per mulinelli di medie dimensioni
 Ø interno mm. 4,8, Ø esterno mm.8
 [ENG] Spare ball bearing medium reel size: internal Ø mm.4,8 external Ø mm.8
 [FRA] Roulement de rechange taille Ø interieur mm.4,8, Ø exterior mm.8
 [ESP] Rodamiento de ricambio para carretes de medias Ø interior mm. 8 Ø exterior mm. 8

Art.1999991

[ITA] Ricambi mulinelli spinning
 [ENG] Spinning reels spares
 [FRA] Rechange pour moulinet a spinning
 [ESP] Ricambio para carretes da spinning



(Min.q.ty 10 pcs.)

PRICE / PC

[ITA] Rullino scorfile di ricambio per mulinelli di medie dimensioni Ø mm.8
 [ENG] Spare line roller medium reel size Ø mm.8
 [FRA] Guide fil de rechange taille Ø mm.8
 [ESP] Rollo correhilo de ricambio para carretes de medias Ø mm. 8

SPARES

Art. 299998. SIC TYPE LOW RIDER-STYLE GUIDES

[ITA] Anelli tipo low rider SIC doppio ponte
[ENG] Double leg SIC type low rider-style guides
[FRA] Anneaux double patte type SIC low rider
[ESP] Anillos doble puente tipo low rider SIC



(Min. q.ty 10 pcs.)

INFO		ART. 299998.	
CODE	DIAMETER	PRICE / PC	
2999980	6		
2999981	8		
2999982	10		
2999983	12		
2999984	16		
2999985	20		

Art. 29999.. LOW RIDER-STYLE TIP GUIDES

[ITA] Puntale tipo low rider SIC
[ENG] Low rider-style
top SIC guide
[FRA] Anneau de pointe type
low rider SIC
[ESP] Contera tipo low rider SIC

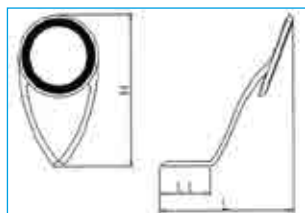


(Min. q.ty 10 pcs.)

INFO		ART. 29999..	
CODE	DIAMETER	PRICE / PC	
2999950	1,5/6		
2999951	1,8/6		
2999952	2,0/6		
2999953	1,5/8		
2999954	1,8/8		
2999955	2,0/8		
2999956	2,2/8		
2999957	2,4/8		
2999958	2,6/8		
2999959	2,8/8		
2999960	2,0/10		
2999961	2,4/10		
2999962	2,8/10		
2999963	3,0/10		
2999964	3,2/10		
2999965	3,5/10		
2999966	4,0/10		
2999967	4,5/10		

Art. 29981.. SIC K CONCEPT MICRO GUIDES KTTSG

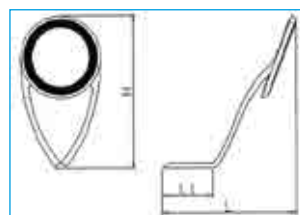
(Min. q.ty 10 pcs.)



INFO		ART. 29981..				
CODE	SIZE	H (MM.)	L1 (MM.)	L (MM.)	PRICE / PC	
2998104	4	5,3	4,8	7,7		
2998105	5	6,5	6,1	9,6		
29981055	5,5	7,3	6,6	10,6		
2998106	6	8,2	7	11,3		
2998107	7	9,2	7,4	12,2		
2998108	8	11,1	9	15,1		
2998110	10	14,5	10	17,7		

Art. 29983.. SIC K CONCEPT LONG GUIDES KLTSG-H

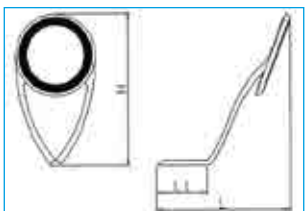
(Min. q.ty 10 pcs.)



INFO		ART. 29983..				
CODE	SIZE	H (MM.)	L1 (MM.)	L (MM.)	PRICE / PC	
2998308	8	26,8	13,5	24		
2998310	10	30,2	16	28,6		
2998312	12	31,8	17	29		
2998316	16	43,3	18	35,4		
2998320	20	50,8	20	37,5		
2998325	25	55,9	22	43,4		

Art. 29982.. SIC K CONCEPT GUIDES KLTSG

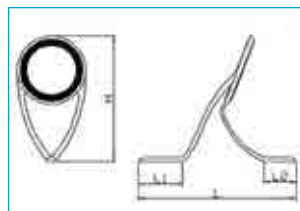
(Min. q.ty 10 pcs.)



INFO		ART. 29982..				
CODE	SIZE	H (MM.)	L1 (MM.)	L (MM.)	PRICE / PC	
2998212	12	19,7	12,2	23,6		
2998216	16	26,2	14	28,3		
2998220	20	33,5	16	35		
2998225	25	44	19	42,9		
2998230	30	60,5	20,5	53,8		

Art. 29984.. SIC K CONCEPT DOUBLE GUIDES KWTSG

(Min. q.ty 10 pcs.)



INFO		ART. 29984..				
CODE	SIZE	H (MM.)	L1 (MM.)	L (MM.)	PRICE / PC	
2998405	5,5	7,6	5,1	17,7		
2998406	6	8,7	5,3	20		
2998407	7	10,3	5,6	20,9		
2998408	8	12,3	6	25,2		
2998410	10	14,6	7	29,2		
2998412	12	17,4	8	33,4		
2998416	16	21,2	9,5	41,3		
2998420	20	28,6	11	50,2		
2998425	25	41,2	14	61,9		
2998430	30	49,4	16,3	71,5		
2998440	40	59,7	20	90		

Art. 30005..

ANELLI DOPPIO PONTE

[ITA] in titanio TBTG tipo sic.
 [ENG] Titanium double leg guides TBTG SIC type.
 [FRA] Anneaux double patte titanium tbtg type SIC.
 [ESP] Anillo doble pata de titanio tbtg tipo sic.



INFO	ART. 30005..		
CODE	DIAMETER	MIN.Q.TY	PRICE / PC
3000506	6	25	
3000508	8	25	
3000510	10	25	
3000512	12	25	
3000516	16	25	
3000520	20	25	
3000525	25	25	
3000530	30	25	
3000540	40	25	

Art. 29994..

ANELLI DOPPIO PONTE

[ITA] modello BCAG tipo SIC.
 [ENG] Two legs guides mod. BCAG SIC type.
 [FRA] Anneaux ligatures double patte type BGAG SIC.
 [ESP] Anillos doble pata modelo BCAG tipo SIC.



INFO	ART. 29994..		
CODE	DIAMETER	MIN.Q.TY	PRICE / PC
2999406	6,0	25	
2999408	8,0	25	
2999410	10,0	25	
2999412	12,0	25	
2999416	16,0	25	
2999420	20,0	25	
2999425	25,0	25	
2999430	30,0	25	
2999440	40,0	25	
2999450	50,0	25	

Art. 30003..

ANELLI TITANIO

[ITA] Becco d'oca TOSTG tipo SIC.
 [ENG] Titanium one leg guides TOSTG SIC type.
 [FRA] Anneaux mono-patte TOSTG type SIC.
 [ESP] Anillo clip TOSTG tipo SIC.



INFO	ART. 30003..		
CODE	DIAMETER	MIN.Q.TY	PRICE / PC
3000306	6	25	
3000307	7	25	
3000308	8	25	
3000310	10	25	
3000312	12	25	
3000316	16	25	
3000320	20	25	
3000325	25	25	
3000330	30	25	

Art. 30007..

ANELLI TITANIO

[ITA] Ponte alto THLTG tipo SIC.
 [ENG] Titanium long bridge guides THLTG SIC type.
 [FRA] Anneaux titanium patte haute THLTG type SIC.
 [ESP] Anillo de titanio pata alto THLTG tipo SIC.



INFO	ART. 30007..		
CODE	DIAMETER	MIN.Q.TY	PRICE / PC
3000704	4	25	
3000705	5	25	
3000706	6	25	
3000708	8	25	
3000710	10	25	
3000712	12	25	
3000716	16	25	
3000720	20	25	

Art. 29992..

ANELLI A BECCO D'OCA

[ITA] modello BVAG tipo SIC.
 [ENG] One leg guides mod. BVAG SIC type.
 [FRA] Anneaux mono-patte mod. BVAG type SIC.
 [ESP] Anillos a clip modelo BVAG tipo SIC



INFO	ART. 29992..		
CODE	DIAMETER	MIN.Q.TY	PRICE / PC
2999204	4,0	25	
2999205	5,0	25	
2999206	6,0	25	
2999207	7,0	25	
2999208	8,0	25	
2999210	10,0	25	
2999212	12,0	25	
2999214	14,0	25	
2999216	16,0	25	
2999220	20,0	25	
2999225	25,0	25	
2999230	30,0	25	

BUSTA O.P.P.

[ITA] con adesivo richiudibile
 [ENG] O.P.P. bag with glued stripe
 [FRA] Sachet O.P.P. refermable
 [ESP] Bolsa O.P.P. que pega y despega

(Min. q.ty 1000 pcs.)



INFO	BUSTA O.P.P.		
CODE	SIZE	PRICE / PC	
2010005	6X10X3,5		
2010006	6X13,5X3,5		
2010010	6X28X4,5		
2010012	8X28X4,5		

Art. 30004..

ANELLI SCORREVOLI

[ITA] in titanio SMTG tipo SIC.
 [ENG] Titanium sliding guides SMTG SIC type.
 [FRA] Anneaux coulissants titanium SMTG type SIC.
 [ESP] Anillo corredizo de titanio SMTG tipo SIC.



INFO	ART. 30004..		
CODE	DIAMETER	MIN.Q.TY	PRICE / PC
3000410	1,0/4	25	
3000412	1,2/4	25	
3000414	1,4/4	25	
3000416	1,6/4	25	
3000417	1,6/6	25	
3000418	1,8/4	25	
3000419	1,8/6	25	
3000420	2,0/6	25	
3000437	2,0/8	25	
3000422	2,2/6	25	
3000438	2,2/8	25	
3000425	2,5/6	25	
3000439	2,5/8	25	
3000428	2,8/6	25	
3000446	2,8/10	25	
3000430	3,0/6	25	
3000441	3,0/10	25	
3000432	3,2/6	25	
3000442	3,2/10	25	
3000435	3,5/8	25	
3000443	3,5/10	25	
3000440	4,0/8	25	
3000444	4,0/10	25	
3000445	4,5/10	25	
3000450	5,0/12	25	



Art. 29993..

ANELLI SCORREVOLI

[ITA] modello BHMAG tipo SIC.
 [ENG] Sliding guides mod. BHMAG SIC type.
 [FRA] Anneaux coulissants type BHMAG SIC.
 [ESP] Corredizos modelo BHMAG tipo SIC.



INFO	ART. 29993..		
CODE	DIAMETER	MIN.Q.TY	PRICE / PC
2999308	0,8/4	25	
2999309	0,9/4	25	
2999310	1,0/4	25	
2999312	1,2/4	25	
2999314	1,4/4	25	
2999316	1,6/4	25	
2999318	1,8/4	25	
2999320	2,0/6	25	
2999322	2,2/6	25	
2999325	2,5/6	25	
2999328	2,8/6	25	
2999330	3,0/6	25	
2999332	3,2/7	25	
2999335	3,5/8	25	
2999340	4,0/8	25	
2999345	4,5/10	25	
2999350	5,0/12	25	

Art. 30002..

PUNTALI TITANIO

[ITA] TMKTT tipo SIC.
 [ENG] Titanium Top guides TMKTT SIC type.
 [FRA] Anneau de pointe titanium TMKTT type SIC.
 [ESP] Contera titanio TMKTT tipo SIC.



INFO	ART. 30002..		
CODE	DIAMETER	MIN.Q.TY	PRICE / PC
3000207	0,7/4	25	
3000208	0,8/4	25	
3000209	0,9/4	25	
3000210	1,0/6	25	
3000212	1,2/6	25	
3000214	1,4/6	25	
3000216	1,6/6	25	
3000218	1,8/6	25	
3000220	2,0/6	25	
3000222	2,2/6	25	
3000224	2,4/6	25	
3000226	2,6/6	25	
3000229	2,8/6	25	
3000228	2,8/8	25	
3000230	3,0/8	25	

Art. 29991..

PUNTALI TIPO SIC

[ITA] modello BLAT tipo SIC.
 [ENG] Top guides mod. BLAT SIC type.
 [FRA] Anneaux de pointe type BLAT SIC.
 [ESP] Conteras modelo BLAT tipo SIC.



INFO	ART. 29991..		
CODE	DIAMETER	MIN.Q.TY	PRICE / PC
2999107	0,7/4	25	
2999108	0,8/4	25	
2999109	0,9/4	25	
2999110	1,0/6	25	
2999112	1,2/6	25	
2999114	1,4/6	25	
2999116	1,6/6	25	
2999118	1,8/6	25	
2999120	2,0/6	25	
2999122	2,2/6	25	
2999124	2,4/6	25	
2999126	2,6/6	25	
2999128	2,8/8	25	
2999130	3,0/8	25	

Art. 29995..

PUNTALI RINFORZATI

[ITA] modello BPAT tipo SIC.
 [ENG] Reinforced top guides mod. BPAT SIC type.
 [FRA] Anneaux de pointe renforces type BPAT sic.
 [ESP] Conteras reforzadas modelo BPAT tipo sic



INFO	ART. 29995..		
CODE	DIAMETER	MIN.Q.TY	PRICE / PC
2999518	1,8/6	25	
2999520	2,0/6	25	
2999522	2,2/6	25	
2999525	2,5/6	25	
2999528	2,8/8	25	
2999530	3,0/8	25	
2999532	3,2/8	25	
2999535	3,5/8	25	
2999540	4,0/10	25	
2999545	4,5/12	25	
2999550	5,0/12	25	
2999555	5,5/16	25	
2999560	6,0/16	25	

Art. 30006..

PUNTALI RINFORZATI

[ITA] in titanio TSTT tipo SIC.
 [ENG] Titanium top guides 2 legs TSTT SIC type.
 [FRA] Anneau de pointe titanium TSTT type SIC.
 [ESP] Contera reforzada con titanio TSTT tipo SIC.



INFO	ART. 30006..		
CODE	DIAMETER	MIN.Q.TY	PRICE / PC
3000616	1,6/6	25	
3000618	1,8/6	25	
3000620	2,0/6	25	
3000629	2,0/8	25	
3000622	2,2/6	25	
3000626	2,2/8	25	
3000625	2,5/6	25	
3000627	2,5/8	25	
3000628	2,8/8	25	
3000630	3,0/8	25	
3000632	3,2/8	25	
3000635	3,5/8	25	
3000637	3,5/10	25	
3000640	4,0/10	25	
3000641	4,5/12	25	
3000642	5/12	25	
3000643	5,5/12	25	
3000644	6/12	25	

Art. 299988..

PUNTALI RINFORZATI "BURGER"

[ITA] modello WO-BSTFT, con pietra doppia arrotondata, ideale per il surf casting, pesca a fondo e carp fishing.
 [ENG] Reinforced flange top guides mod. WO-BSTFT, with double rounded stone, suitable for surf casting, strong fishing and carp fishing.
 [FRA] Anneaux de pointe renforces mod. WO-BSTFT avec oelliet plus gros ideale pour surf casting, peche a la carpe et aux gros poissons.
 [ESP] Conteras reforzadas modelo WO-BSTFT con piedra doble redondeada, ideales para el surf casting, pesca de fondo y carp fishing.



INFO	ART. 299988..		
CODE	DIAMETER	MIN.Q.TY	PRICE / PC
2999880	2,0/10	25	
2999881	2,2/10	25	
2999882	2,5/10	25	
2999883	2,8/12	25	
2999884	3,0/12	25	
2999885	3,2/12	25	
2999886	3,5/16	25	
2999887	4,0/16	25	
2999888	4,5/16	25	

Art. 29996..

ANELLI GHIERA

[ITA] BMVTSG, anello di colore nero con pietra tipo SIC.

[ENG] Ring guides mod. BMVTSG, black frame, SIC type.

[FRA] Anneaux a collar mod. BMVTSG type SIC couleur noire.

[ESP] Anillos de tubo de color negro con piedra tipo SIC



INFO	ART. 29996..		
CODE	DIAMETER	MIN.Q.TY	PRICE / PC
29996035	3,5/8	25	
2999604	4,0/8	25	
29996045	4,5/10	25	
2999605	5,0/10	25	
2999606	6,0/12	25	
29996065	6,5/12	25	
2999607	7,0/12	25	
2999608	8,0/16	25	
2999609	9,0/16	25	
2999610	10,0/16	25	
2999611	11,0/20	25	
2999612	12,0/20	25	
2999613	13,0/20	25	
2999614	14,0/20	25	
2999615	15,0/20	25	
2999616	16,0/20	25	
2999617	17,0/20	25	
2999618	18,0/20	25	
2999619	19,0/20	25	
2999620	20,0/20	25	
2999622	22,0/25	25	
2999623	23,0/25	25	
2999626	26,0/30	25	
2999627	27,0/30	25	
2999628	28,0/30	25	
2999629	29,0/30	25	
2999630	30,0/30	25	

Art. 29999..

ANELLI GHIERA SVEG

[ITA] Anelli ghiera SVEG.

[ENG] Ring guides mod. SVEG.

[FRA] Anneaux a collar mod. SVEG.

[ESP] Anillos de tubo modelo SVEG.



INFO	ART. 29999..		
CODE	DIAMETER	MIN.Q.TY	PRICE / PC
2999903	3,0/8	25	
29999035	3,5/8	25	
2999904	4,0/8	25	
29999045	4,5/10	25	
2999905	5,0/10	25	
2999906	6,0/12	25	
29999065	6,5/12	25	
2999907	7,0/12	25	
2999908	8,0/16	25	
2999909	9,0/16	25	
2999910	10,0/16	25	
2999911	11,0/20	25	
2999912	12,0/20	25	
2999913	13,0/20	25	
2999914	14,0/20	25	
2999915	15,0/20	25	
2999916	16,0/20	25	
2999917	17,0/20	25	
2999918	18,0/20	25	
2999919	19,0/20	25	
2999920	20,0/20	25	
2999921	21,0/25	25	
2999922	22,0/25	25	
2999923	23,0/25	25	
2999924	24,0/25	25	

Art. 29997..

PUNTALI GHIERA ELTG

[ITA] Puntali ghiera ELTG

[ENG] Top guides mod. ELTG.

[FRA] Anneau de pointe ELTG

[ESP] Conteras de tubo modelo ELTG



INFO	ART. 29997..		
CODE	DIAMETER	MIN.Q.TY	PRICE / PC
2999716	1,6/6	25	
2999718	1,8/6	25	
2999720	2,0/6	25	
2999722	2,2/6	25	
2999725	2,5/6	25	
2999728	2,8/6	25	
2999730	3,0/8	25	
2999735	3,5/8	25	
2999740	4,0/8	25	
2999745	4,5/10	25	
2999750	5,0/10	25	
2999755	5,5/12	25	
2999760	6,0/12	25	

Art. 299957..

PUNTALI A DOPPIA CARRUCOLA

[ITA] modello NRHT.

[ENG] Roller double top guides mod. NRHT.

[FRA] Anneau de pointe a double poulie mod. NRHT.

[ESP] Conteras a double garrucha modelo NRHT



INFO	ART. 299957..		
CODE	DIAMETER	MIN.Q.TY	PRICE / PC
2999570	4,5	25	
2999571	5,0	25	
2999572	5,5	25	
2999573	6,0	25	

Art. 29998..

PUNTALI PORTA-NIGHTLIGHT

[ITA] rinforzati mod.WO-BSTFT-K.

[ENG] Reinforced top guides with Nightlight holder mod. WO-BSTFT-K.

[FRA] Anneaux de pointe renforces avec support nightlight type WO-BSTFT-K.

[ESP] Contera porta-nightlight reforzada modelo WO-BSTFT-K



INFO	ART. 29998..		
CODE	DIAMETER	MIN.Q.TY	PRICE / PC
2999890	2,5/10	25	
2999891	3,0/12	25	
2999892	3,5/16	25	

CIME IN CARBONIO SOLIDO

[ITA] Cime in carbonio solido
[ENG] Carbon solid tip section.
[FRA] Scion carbone solide.
[ESP] Puntas de carbono solido

CODE	LENGTH (CM.)	DIAMETER	MIN.Q.TY	PRICE / PC
2979907	50	2,0/0,7	25	
2979908	60	3,0/0,8	25	
2979909	60	2,2/0,7	25	
2979915	70	2,0/0,7	25	
2979916	70	2,5/0,7	25	
2979917	70	3,0/0,8	25	
2979918	70	3,5/0,8	25	
2979919	70	4,0/0,9	25	

CIME IN CARBONIO RETTIFICATO TUBOLARE

[ITA] Cime in carbonio rettificato tubolare
[ENG] Tubular rectified carbon tip.
[FRA] Scion carbone rectifié tubulaire.
[ESP] Puntas de carbono tubular rectificado

CODE	LENGTH (CM.)	DIAMETER	MIN.Q.TY	PRICE / PC
2979948	100	4,20/1,5	25	
2979949	100	4,50/1,5	25	
2979950	100	4,68/1,3	25	
2979951	100	4,75/1,4	25	
2979952	100	4,80/1,5	25	
2979953	100	5,20/1,4	25	
2979961	110	5,20/1,4	25	
2979962	110	6,00/1,4	25	

CIME SURF IN CARBONIO TUBOLARE AZIONE 200 G.

[ITA] Cime Surf azione 200 g. in carbonio tubolare
[ENG] Tubular surf action 200 g. carbon tip.
[FRA] Scion surf puissance 200 g. carbone tubulaire.
[ESP] Puntas surf accion 200 g. de carbono tubular

CODE	LENGTH (CM.)	DIAMETER	MIN.Q.TY	PRICE / PC
2979965	110	8,0X2,4	25	
2979966	90	8,0X3,0	25	
2979970	140	10,0X1,6	25	
2979972	130	10,0X3,0	25	

SOTTOCIMA IN CARBONIO

[ITA] Sottocima in carbonio
[ENG] Carbon second piece
[FRA] Deuxieme element carbone
[ESP] Segundo tramo de carbono

CODE	LENGTH (CM.)	DIAMETER	MIN.Q.TY	PRICE / PC
2979977	110	8,00/4,5	25	
2979978	110	10,0/4,8	25	

TERZO PEZZO IN CARBONIO

[ITA] Terzo pezzo in carbonio
[ENG] Carbon third section
[FRA] Troisième element carbone
[ESP] Tercer tramo de carbono

CODE	LENGTH (CM.)	DIAMETER	MIN.Q.TY	PRICE / PC
2979980	120	17/9	25	

CIME IN FIBRA DI VETRO

[ITA] Cime in fibra di vetro. Tubolari universali
[ENG] Universal fiberglass tip.
[FRA] Scion fibre de verre
[ESP] Puntas de fibra de vidrio universales

CODE	LENGTH (CM.)	DIAMETER	MIN.Q.TY	PRICE / PC
2990001	85	5,0/1,8	25	
2990015	110	8,0/2,3	25	
2990016	110	10/2,5	25	

CIME IN FIBRA DI VETRO SOLIDO

[ITA] Cime in fibra di vetro solido
[ENG] Universal solid fiberglass tip.
[FRA] Scion fibre de verre solide
[ESP] Puntas de fibra de vidrio solido

CODE	LENGTH (CM.)	DIAMETER	MIN.Q.TY	PRICE / PC
2980100	100	5,0/1,5	25	
2980101	100	6,0/1,5	25	
2980102	100	7,0/2,0	25	
2980103	100	8,0/2,0	25	
2980104	100	9,0/2,2	25	

solid glass tip

CIME IN NYLON MULTICOLOR

[ITA] Cime in nylon multicolor
[ENG] Multicolour nylon tip.
[FRA] Scion nylon multicolore.
[ESP] Puntas en nylon multicolor

CODE	LENGTH (CM.)	DIAMETER	ACTION NR.	MIN.Q.TY	PRICE / PC
2980050	60	3,5/0,7	3 (SGOMBRO MORBIDA)	25	
2980051	60	4,0/0,7	3	25	
2980052	60	5,0/0,7	3	25	
2980053	60	6,0/0,7	3	25	
2980060	60	3,5/0,7	4 (MEDIA)	25	
2980061	60	4,0/0,7	4	25	
2980062	60	5,0/0,7	4	25	
2980063	60	6,0/0,7	4	25	
2980090	80	4,0/0,7	4 (MEDIA)	25	
2980091	80	5,0/0,7	4	25	
2980092	80	6,0/0,7	4	25	
2980093	80	8,0/0,7	4	25	